

TM 55-4920-320-30P

DEPARTMENT OF THE ARMY TECHNICAL MANUAL

---

DIRECT SUPPORT MAINTENANCE REPAIR PARTS AND

SPECIAL TOOLS LIST

# TESTER, PITOT AND STATIC SYSTEM

## P/N 7365

FSN 4920-988-0206



HEADQUARTERS, DEPARTMENT OF THE ARMY  
MARCH 1969



CHANGE

NO. 3

HEADQUARTERS  
DEPARTMENT OF THE ARMY  
WASHINGTON, D.C., 31 DECEMBER 1992DIRECT SUPPORT MAINTENANCE  
REPAIR PARTS AND SPECIAL TOOLS LISTSTESTER, PITOT AND STATIC SYSTEM  
P/N 7365  
NSN 4920-00-988-0206

TM 55-4920-320-30P, 14 March 1969, is changed as follows:

Page 1, Figure 1, Delete Manifold Pressure and Fuel Pressure Indicators from picture.

Page 3, Figure 3, Delete Manifold Pressure and Fuel Pressure Indicators from picture.

Page 5, Figure 4, Delete Items 36 and 37 from figure.

Page 11, Delete items figure 4, index 36 and 37 from listing

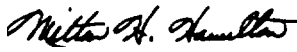
Page 13, Delete items figure 4, index 36 and 37 from listing.

Page 14, Delete items figure 4, index 36 and 37 from listing.

TM 55-4920-320-30P  
C3

By Order of the Secretary of the Army:

Official:

  
MILTON H. HAMILTON  
*Administrative Assistant to the  
Secretary of the Army*  
03278

GORDON R. SULLIVAN  
*General, United States Army  
Chief of Staff*

DISTRIBUTION:

To be distributed in accordance with DA Form 12-31-E, block no. 1346, requirements for TM 55-4920-320-30P.



CHANGE }  
No. 2 }

**HEADQUARTERS  
DEPARTMENT OF THE ARMY  
WASHINGTON, D.C., 31 MAY 1988**

**DIRECT SUPPORT MAINTENANCE  
REPAIR PARTS AND SPECIAL TOOLS LISTS**

**TESTER, PITOT AND STATIC SYSTEM  
P/N 7365  
NSN 4920-00-988-0206**

**TM 55-4920-320-30P, 14 March 1969, is changed as follows:**

Page iii, paragraph 7, Lines 8-10 are changed to read "direct to: Commander, US Army Aviation Systems Command, ATTN: AM SAV-MMD, 4300 Goodfellow Blvd., St. Louis, MO 63120 -1798."

The following change is made in the columns indicated:

page 9, Figure 4, Item 22, Columns (2) and (3) are changed to read "NSN 6610-01-125-0726 and Reference Number 25454-5."

**By Order of the Secretary of the Army:**

**CARL E. VUONO**  
*General, United States Army*  
*Chief of Staff*

**Official:**

**R. L. DILWORTH**  
*Brigadier General, United States Army*  
*The Adjutant General*

**DISTRIBUTION:**

To be distributed in accordance with DA Form 12-31, AVUM and AVIM Maintenance requirements for All Fixed and Rotary Wing Aircraft.



CHANGE }  
 No. 1 }

HEADQUARTERS  
 DEPARTMENT OF THE ARMY  
 WASHINGTON, D.C., 25 January 1984

**DIRECT SUPPORT MAINTENANCE  
 REPAIR PARTS AND SPECIAL TOOLS LISTS**

**TESTER, PITOT AND STATIC SYSTEM  
 P/N 7365  
 NSN 4920-00-988-0206**

**TM 55-4920-320-30P, 14 March 1969, is changed as follows:**

Title is changed as shown above.

Page iii, paragraph 7, Lines 8-10 are changed to read "direct to: Commander, US Army Troop Support and Aviation Materiel Readiness Command, ATTN: DRSTS-MPSD, 4300 Goodfellow Blvd., St. Louis, MO 63120.

The following change is made in the column indicated:

Page 4. The description of P/N 38615 is changed to read, "ADAPTER, POWER CABLE, 11 in. lg, 3 phase ac."

**By Order of the Secretary of the Army:**

**JOHN A. WICKHAM, JR.**  
*General, United States Army*  
*Chief of Staff*

**Official:**

**ROBERT M. JOYCE**  
*Major General, United States Army*  
*The Adjutant General*

**DISTRIBUTION:**

To be distributed in accordance with DA Form 12-31, Direct Support Maintenance requirements for all Fixed Wing and Rotor Wing aircraft.





TECHNICAL MANUAL }  
 NO. 55-4920-320-30P }

HEADQUARTERS  
 DEPARTMENT OF THE ARMY  
 WASHINGTON, D. C., 14 March 1969

# TESTER, PITOT AND STATIC SYSTEM

P/N 7365

CURRENT AS OF 25 NOVEMBER 1968

## Table of Contents

SECTION	DESCRIPTION	PAGE
I	INTRODUCTION . . . . .	
II	REPAIR PARTS . . . . .	4
GROUP		
01	Accessories . . . . .	4
02	Cover Assembly . . . . .	4
03	Case Assembly and Control Panel . . . . .	6
04	Instrument Panel . . . . .	6
05	Bottom Plate . . . . .	11
06	Bulk Material . . . . .	12
SECTION		
III	SPECIAL TOOLS, TEST AND SUPPORT EQUIPMENT (NOT APPLICABLE)	
IV	INDEX . . . . .	13
PART		
1	Federal Stock Number Index . . . . .	13
2	Reference Number Index . . . . .	14

## SECTION I

### INTRODUCTION

#### 1. Scope.

This manual lists repair parts required for the performance of direct support maintenance of Tester, Pitot and Static System, United Manufacturing Co., Electronics Division Model PST, Type 2, P/N 7365, FSN 4920-988-0206.

#### 2. General.

This Repair Parts and Special Tools List is divided into the following sections:

*a. Repair Parts-Section II.* A list of repair parts authorized for the performance of maintenance at direct support level in figure and item number sequence within each functional group.

*b. Special Tools, Test and Support Equipment-Section III.* (Not applicable).

*c. Index-Section IV.* This section is divided into the following parts:

(1) Federal Stock Number Index-Part 1. A list of Federal stock numbers in ascending numerical sequence appearing in all listings cross-referenced to figure and item number.

(2) Reference Number Index-Part 2. A list of reference numbers in alpha-numerical sequence appearing in all listings cross-referenced to manufacturers code and figure and item number.

### 3. Explanation of Columns.

The following provides an explanation of columns in the tabular list in Section II.

#### a. Source, Maintenance and Recoverability Codes (SMR).

- (1) Source code indicates the selection status and source for the listed item. Source codes used are—

Code	Explanation
P	Applies to repair parts which are stocked in or supplied from General Services Administration/Defense Supply Agency or Army Supply System and are authorized for use at indicated maintenance categories.
M	Applies to repair parts which are not procured or stocked, but are to be manufactured at indicated maintenance categories.
X2	Applies to repair parts which are not stocked. The indicated maintenance category requiring such repair parts will attempt to obtain through cannibalization; if not obtainable through cannibalization, such repair parts will be requisitioned with supporting justification through normal channels.

- (2) Maintenance code indicates the lowest category of maintenance authorized to install the listed item. Parts which require manufacturer or assembly will be indicated in the source code column the category which will make or assemble the item (i.e., AF, MF). The maintenance used is—

Code	Explanation
F	Direct support

- (3) Recoverability Code. Indicates whether unserviceable items should be returned for recovery or salvage. Items not coded are expendable. The recoverability code used is—

Code	Explanation
R	Applies to repair parts and assemblies which are economically repairable at DSU/GSU activities and normally are furnished by supply on an exchange basis.

b. *Federal Stock Number.* Indicates the Federal stock number assigned to the item and will be used for requisitioning purposes. An item in one of the following categories will not be published with a Federal stock number. Item source coded A, M or XI.

c. *Description.* Indicates the Federal item name and any additional description of the item required. Further information to clarify item relationship, item replacement, multiple application and material required for fabrication is also identified. The make from (MAKEFR) items appear in group 06, listed in ascending numerical Federal stock number sequence.

- (1) Reference Number. A reference number and manufacturers code subcolumn indicates the manufacturers' reference number or identification number followed by the applicable five-digit Federal supply code for manufacturers in parentheses.

- (2) Models Usable On Code column is not applicable to this manual.

d. *Unit of Issue (U/I).* A 2-character alphabetic abbreviation indicating the amount or quantity in which the item is used, e.g., FT, EA, PR, etc.

e. *Quantity Incorporated in Unit.* Indicates the quantity of the item used in the functional group. A "V" appearing in this column in lieu of a quantity indicates that a definite quantity cannot be indicated (e.g., shims, spacers, etc). When attaching parts are shown as attaching two or more items, the quantities of the attaching parts are those necessary to attach only one of the items.

#### f. 30-Day DS Maintenance Allowance.

- (1) The allowance column is divided into three subcolumns. Indicated in each subcolumn, opposite the first appearance of each item is the total quantity of items authorized for the number of equipments supported. Subsequent appearances of the same item will have the letters "REF" in the allowance column. Items authorized for use as required, but not for initial stockage are identified with an asterisk (\*) in the allowance column.

- (2) The quantitative allowance for DS level of maintenance will represent initial stockage for a 30-day period for the number of equipments supported.

- (3) Determination of the total quantity of parts required for the maintenance of more than 100 of these equipments

can be accomplished by converting the equipment quantity to a decimal factor by placing a decimal point before the next to last digit of the number to indicate hundredths, and multiplying the decimal factor by the parts quantity authorized in the 51-100 allowance column. Example, authorized allowance for 51-100 equipments is 40; for 150 equipments multiply 40 by 1.50 or 60 parts required.

g. 1-Year Allowance Per 100 Equipments/Contingency Planning Purposes. (Not applicable).

h. Illustration.

- (1) Figure Number. Indicates the figure number of the illustration in which the item is shown.
- (2) Item Number. Indicates the call-out number used to reference the item in the illustration.

#### 4. Special Information.

Attaching parts are listed immediately after the part(s) they attach and in the same indent. They are separated from the part(s) by the words "attaching parts." When they attach an assembly which is broken down to show detail parts, the attaching parts are separated from the details of the assembly by the symbol \*(. \* ...." Details of the assembly then are indented one space to the right of their next higher assembly, which appears above the attaching parts.

#### 5. Abbreviations (Mnemonic Codes)

The following abbreviations and mnemonic codes are used:

AC. . . . .	Alternating current
DC . . . . .	Direct current
FT. . . . .	Foot (feet)
ID. . . . .	Inside diameter(s)
IN . . . . .	Inches(es)
LG . . . . .	Long (length)
MAKEFR. . . . .	Make from
MAX. . . . .	Maximum
MTG . . . . .	Mounting(s)
OD . . . . .	Outside diameter(s)
PSI . . . . .	Pounds per square inch
U/W. . . . .	Used with

#### 6. Federal Supply Code for Manufacturers.

Code	Manufacture and Location
07707	United Shoe Machinery Corp Fastener Division 510 River Rd Shelton CT 06485
81349	Military Specifications Promulgated by Standardization Div Directorate of Logistic Services DSA
86786	Rice Carroll W Piedmont CA
88044	Aeronautical Standards Group Dept of Navy and Air Force
96096	Military Standards Promulgated by Standardization Div Directorate of Logistic Services DSA
99664	United Manufacturing Division of UMC Electronics co 460 Sackett Point Road North Haven CT 06473

#### 7. Recommendations for Equipment Manual Improvements.

Report of errors, omissions, and recommendations for improving this publication by the individual user is encouraged. Reports should be submitted on DA Form 2028 (Recommended Changes to DA Publications) and forwarded direct to the Commanding General, U.S. Army Aviation Systems Command, ATTN: AMSAV-R-MLRA, P. O. Box 209, St. Louis, MO 63166.



TM55-4920-320-30P

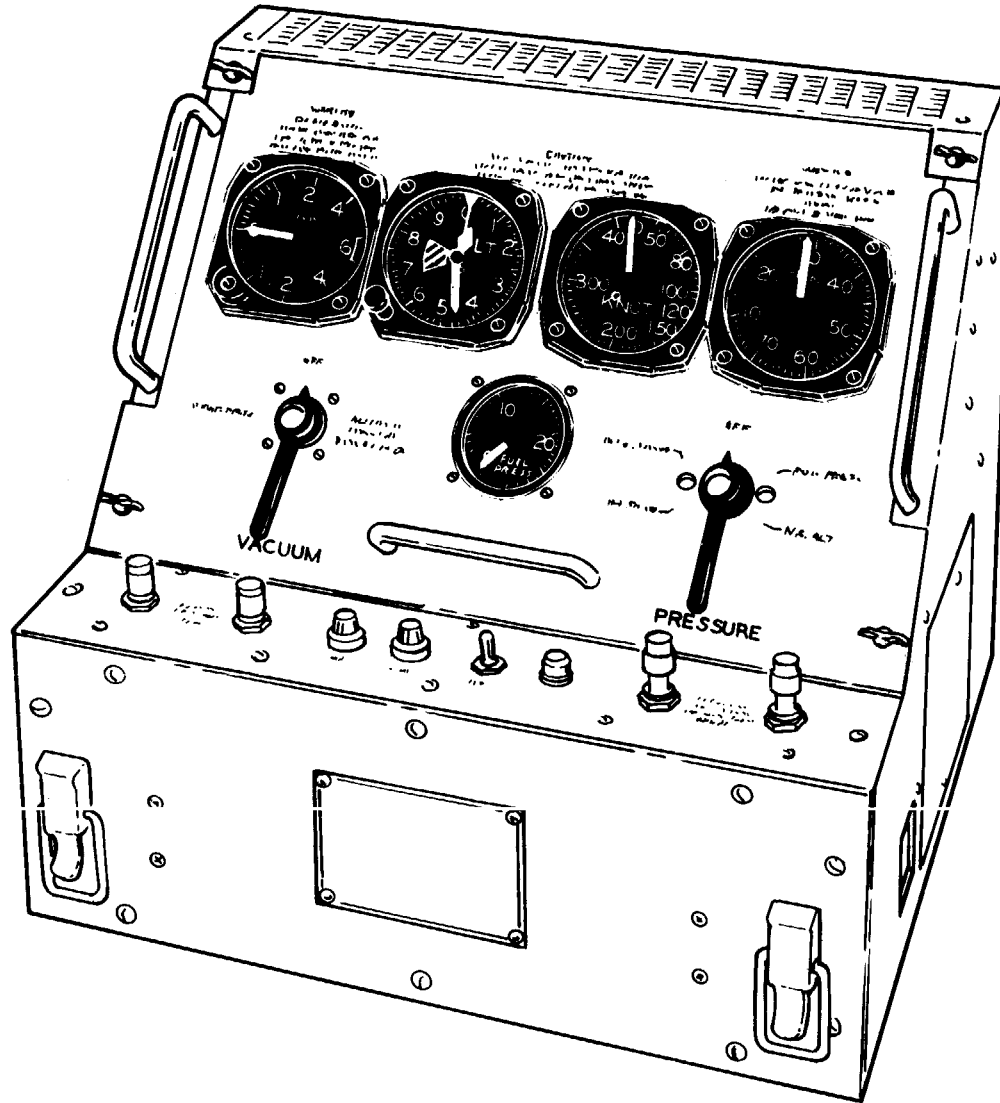


Figure 1. Tester, Pitot and Static System

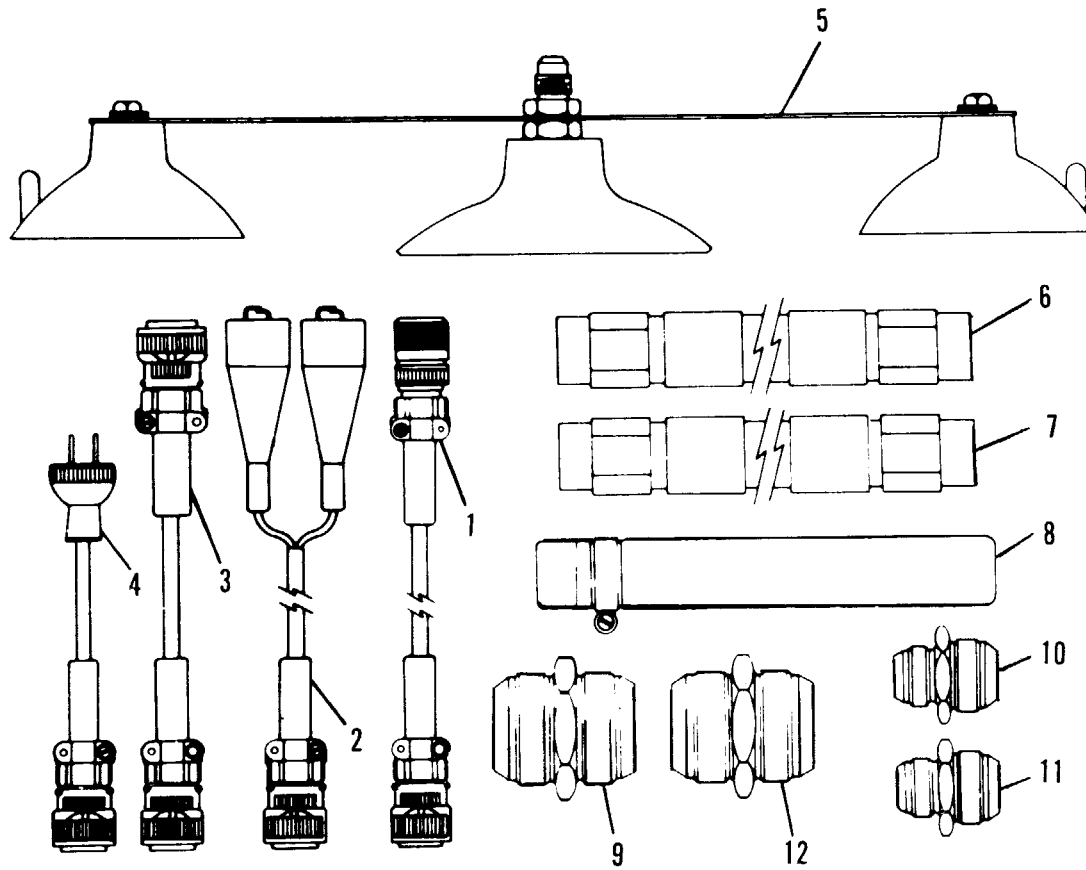


Figure 2. Accessories

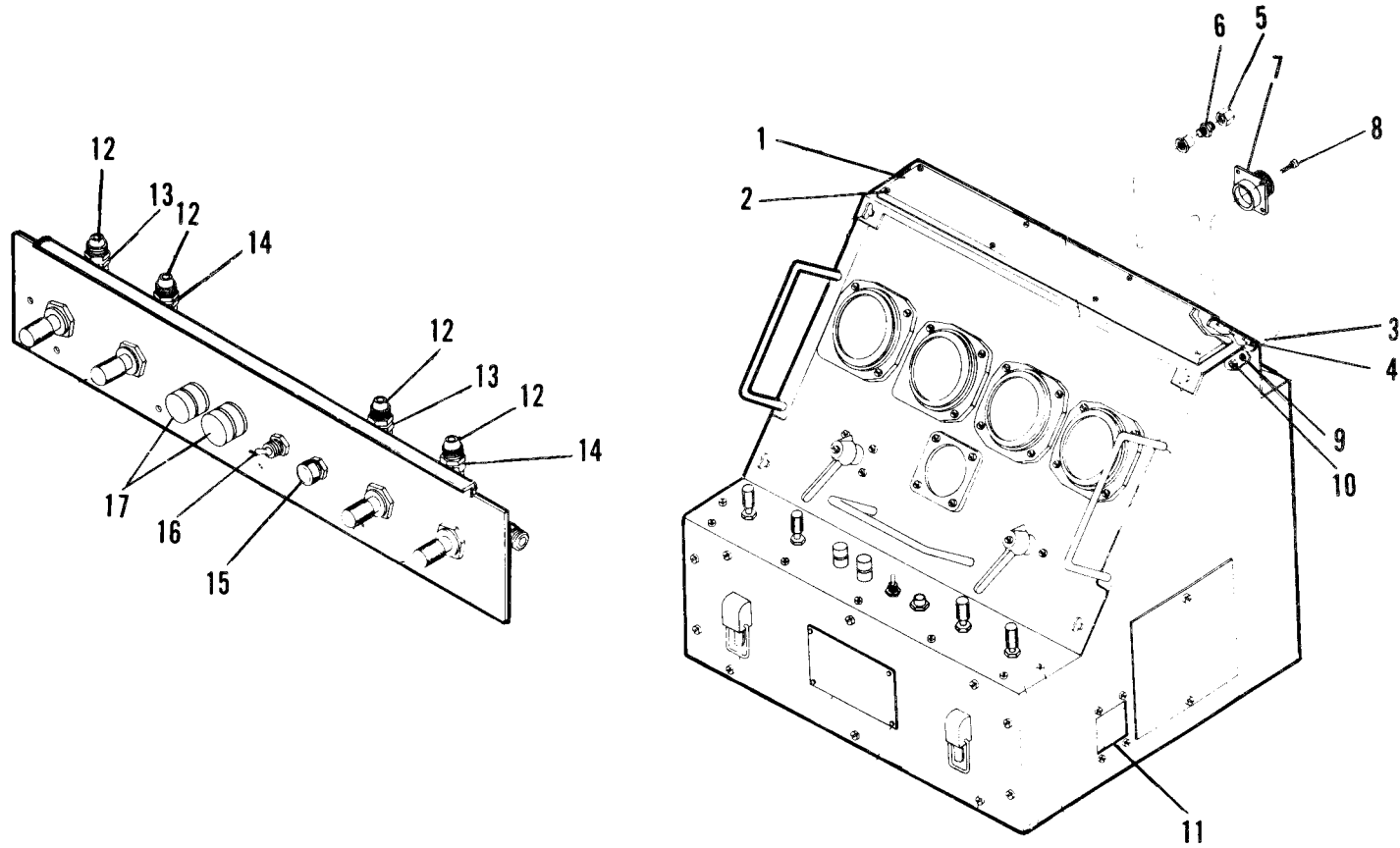


Figure 3. Case Assembly and Control Panel



(1) SOURCE, MAINT AND REC CODE			(2) FEDERAL STOCK NUMBER	(3) DESCRIPTION  REFERENCE NUMBER & MFR CODE	(4) MODELS USABLE ON	(5) UNIT OF IN UNIT	(6) 30-DAY DS MAINT ALW			(7) 1-YR ALW PER 100 EQUIP CNTGCV	(8) DEPOT MAINT ALW PER 100 EQUIP	(9) ILLUSTRATION (A) (B) FIG ITEM NO NO	
(A)	(B)	(C)					(A)	(B)	(C)			(A)	(B)
SOURCE CODE	MAINT LEVEL	RECOV CODE					1-20	21-50	51-100			NO	NO
P	F	R	4920-988-0206	7365	(99664)	TESTER, PITOT AND STATIC SYSTEM, PORTABLE, SELF-CONTAINED, USED TO TEST RATE-OF CLIMB INDICATOR, ALTIMETER, AIRSPEED INDICATOR, MANIFOLD PRESSURE GAGE & FUEL PRESSURE GAGE							1
SECTION II REPAIR PARTS													
GROUP 01 ACCESSORIES													
P	F		4920-865-8007	38613	(99664)	CABLE ASSEMBLY, SPECIAL PURPOSE, AC POWER, 9FT, 3 IN. LG	EA	1	*	*	*		2 1
P	F		4920-855-6125	38614	(99664)	CABLE ASSEMBLY, SPECIAL PURPOSE, DC POWER, 9 FT LG	EA	1	*	*	*		2 2
P	F		4920-865-8064	38615	(99664)	ADAPTER, POWER CABLE, 11 IN. LG SINGLE PHASE AC	EA	*	*	*			2 3
P	F		4920-866-6950	38616	(99664)	ADAPTER, POWER CABLE, 8 IN. LG 3 PHASE AC	EA	1	*	*	*		2 4
X2	F			38619	(99664)	ADAPTER, STATIC PORT, FLUSH	EA	1					2 5
X2	F			38630	(99664)	HOSE ASSEMBLY, 5 FT LG	EA	1					2 6
X2	F			38631	(99664)	HOSE ASSEMBLY, 6 FT LG	EA	1					2 7
P	F		4920-866-6980	38632	(99664)	ADAPTER, PITOT HEAD	EA	1	*	*	*		2 8
P	F		4730-834-9560	MS24392D4	(96906)	NIPPLE, TUBE, U/W 1/4 IN. OD TUBE	EA	1	*	*	*		2 9
P	F		4730-812-5036	MS24399D3	(96906)	REDUCER, TUBE, 5/16 IN. OD TUBE TO 1/4 IN. OD TUBE	EA	1	*	*	*		2 10
P	F		4730-828-9974	MS24399D2	(96906)	REDUCER, TUBE, 1/4 IN. OD TO 1/8 IN OD TUBE	EA	1	*	*	*		2 11
P	F		4730-866-1834	MS24392D3	(96906)	NIPPLE, TUBE, U/W 3/16 IN. OD TUBE	EA	1	*	*	*		2 12
GROUP 02 COVER ASSEMBLY													
X2	F			69588	(99664)	HINGE, CONTINUOUS, COVER TO CASE	EA	1					3

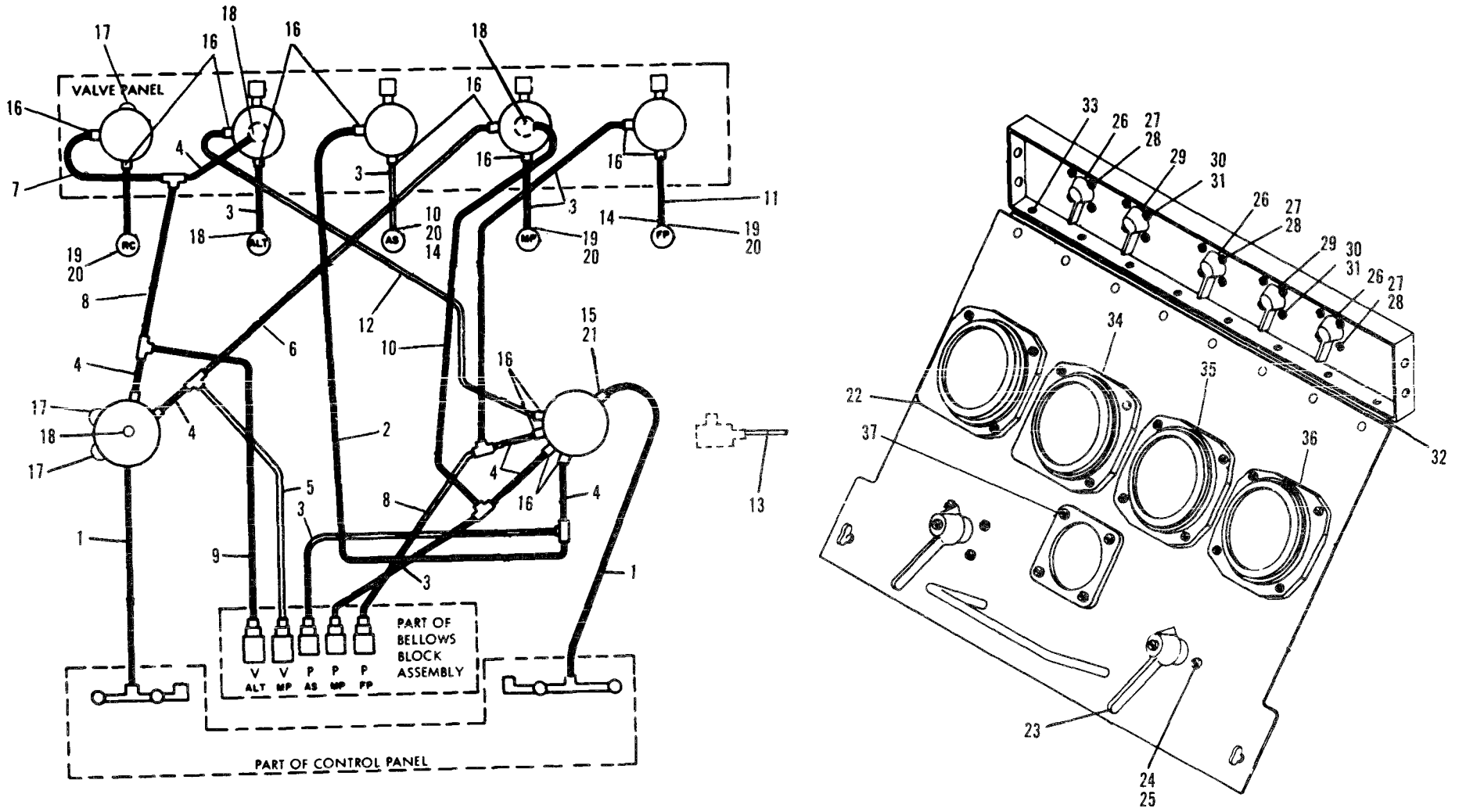


Figure 4. Instrument Panel

(1) SOURCE, MAINT AND REC CODE (A) (B) (C) SOURCE MAINT RECOV CODE LEVEL CODE			(2) FEDERAL STOCK NUMBER	(3) DESCRIPTION  REFERENCE NUMBER & MFR CODE	(4) MODELS USABLE ON	(5) UNIT OF ISSUE	(6) 30-DAY DS MAINT ALW INC IN UNIT (A) (B) (C) 1-20 21-50 51-100			(7) 1-YR ALW PER 100 EQUIP CNTGCT	(8) DEPOT MAINT ALW PER 100 EQUIP	(9) ILLUSTRATION (A) (B) FIG ITEM NO NO		
GROUP 03 CASE ASSEMBLY AND CONTROL PANEL														
X2	F			191236 (99664)		EA	1						3	1
P	F		5305-993-0191	MS35206-212 (96906)		EA	8	*	*	*	*		3	2
X2	F			69578 (99664)		EA	1						3	3
P	F		5320-957-3582	AD42S (07707)		EA	16	*	*	*			3	4
P	F		4730-720-1508	AN929A4C (88044)		EA	4	*	*	*			3	5
P	F		4730-186-7797	AN911-1 (88044)		EA	4	*	*	*			3	6
P	F		5935-721-0490	MS3102R18-1P (96906)		EA	1	*	*	*			3	7
P	F		5305-993-0191	MS35206-212 (96906)		EA	4	*	*	*			3	8
P	F		5310-543-2410	MS35338-40 (96906)		HD	4	*	*	*			3	9
P	F		5310-013-4524	MS35649-42 (96906)		HD	4	*	*	*			3	10
X2	F			32878 (99664)		EA	1						3	11
X2	F		4730-187-0085	AN816-3D (88044)		EA	4	*	*	*			3	12
P	F		4730-278-9352	AN916-1 (88044)		EA	2	*	*	*			3	13
X2	F		4730-278-3989	AN917-1 (88044)		EA	2	*	*	*			3	14
P	F		6420-155-7836	MS25237-327 (96906)		EA	1	*	*	*			3	15
P	F			12588 (99664)		EA	1						3	16
P	F			571468 (99664)		EA	1						3	
P	F		5920-892-9311	FHN26G1 (81349)		EA	2	*	*	*			3	17
GROUP 04 INSTRUMENT PANEL														
MF	F			38719-1 (99664)			2						4	1

(1) SOURCE, MAINT AND REC CODE (A) (B) (C) SOURCE MAINT RECOV CODE LEVEL CODE			(2) FEDERAL STOCK NUMBER	(3) DESCRIPTION  REFERENCE NUMBER & MFR CODE	(4) MODELS USABLE ON	(5) UNIT OF ISSUE	(6) QTY INC IN UNIT (A) (B) (C) 1-20 21-50 51-100	(7) 30-DAY DS MAINT ALW  1-YR ALW PER 100 EQUIP CNTGCV	(8) DEPOT MAINT ALW PER 100 EQUIP	(9) ILLUSTRATION (A) (B) FIG ITEM NO NO	
GROUP 04 INSTRUMENT PANEL CONTINUED											
MF	F		38719-2	(99664)			1			4	2
					HOSE ASSEMBLY, 7-3/4 IN. LG, AIRSPEED INDICATOR VALVE TO PRESSURE SELECTOR VALVE MAKEFR AR 4720-277-8982 HOSE 2 EA P/N MS27404-3 ADAPTER						
MF	F		38719-3	(99664)			7			4	3
					HOSE ASSEMBLY, 8-3/4 IN. LG 1 EA AIRSPEED VALVE TO AIRSPEED INDICATOR 1 EA ALTIMETER VALVE TO ALTIMETER INDICATOR 1 EA BELLOWS AIRSPEED PORT TO PRESSURE SELECTOR VALVE 1 EA BELLOWS MANIFOLD PRESSURE PORT TO PRESSURE SELECTOR VALVE 1 EA FUEL FILTER TO PRESSURE SELECTOR VALVE 1 EA MANIFOLD PRESSURE VALVE TO MANIFOLD PRESSURE GAGE 1 EA RATE OF CLIMB VALVE TO RATE OF CLIMB INDICATOR MAKEFR AR 4720-277-8982 HOSE 14 EA P/N MS27404-3 ADAPTER						

(1)			(2)	(3)	(4)	(5)	(6)			(7)	(8)	(9)		
SOURCE, MAINT AND REC CODE			FEDERAL STOCK NUMBER	DESCRIPTION	MODELS USABLE ON	UNIT OF ISSUE	30-DAY DS MAINT ALW			1-YR ALW PER 100 EQUIP CNTGCV	DEPOT MAINT ALW PER 100 EQUIP	(A) FIG NO	(B) ITEM NO	
(A)	(B)	(C)	NUMBER	REFERENCE NUMBER & MFR CODE			UNIT	INC	ALW	PER	MAINT	ALW	PER	
SOURCE CODE	MAINT LEVEL	RECOV CODE					IN	IN	(A)	(B)	(C)	100	100	
									1-20	21-50	51-100			
GROUP 04 INSTRUMENT MANEL CONTINUED														
MF	F			38719-4 (99664)	HOSE ASSEMBLY, 2 IN LG 1 EA ALTIMETER VALVE 3 EA PRESSURE SELECTOR VALVE 2 EA VACUUM SELECTOR VALVE MAKEFR AR 4720-277-8982 HOSE		6						4	4
MF	F			38719-5 (99664)	12 EA P/N MS27404-3 ADAPTER HOSE ASSEMBLY, 12-3/4 IN. LG, BELLOWS, MANIFOLD VACUUM PORT TO VACUUM SELECTOR VALVE MAKEFR AR 4720-27-8982 HOSE		1						4	5
MF	F			38719-6 (99664)	2 EA P/N MS27404-3 ADAPTER HOSE ASSEMBLY, 14-3/4 IN. LG, MANIFOLD PRESSURE VALVE TO VACUUM SELECTOR VALVE MAKEFR AR 4720-277-8982 HOSE		1						4	6
MF	F			38719-7 (99664)	2 EA P/N MS27404-3 ADAPTER HOSE ASSEMBLY, 9-7/8 IN. LG, RATE OF CLIMB VLAVE MAKEFR AR 4720-277-8982 HOSE		1						4	7
MF	F			38719-8 (99664)	2 EA P/N MS27404-3 ADAPTER HOSE ASSEMBLY, 8 IN. LG 1 EA BELLOWS FUEL PRESSURE PORT TO PRESSURE SELECTOR VALVE 1 EA VACUUM SELECTOR VALVE TO RATE OF CLIMB MAKEFR AR 4720-277-8982 HOSE		2						4	8
MF	F			38719-9 (99664)	4 EA P/N MS27404-3 ADAPTER HOSE ASSEMBLY, 10-1/8 IN. LG, BELLOWS ALTIMETER VACUUM PORT TO VACUUM SELECTOR VALVE MAKEFR AR 4720-277-8982 HOSE		1						4	9
MF	F			38719-10 (99664)	2 EA P/N MS27404-3 ADAPTER HOSE ASSEMBLY, 6-1/4 IN. LG, MANIFOLD PRESSURE VALVE MAKEFR AR 4720-277-8982 HOSE		1						4	10

(1) SOURCE, MAINT AND REC CODE (A) (B) (C) SOURCE MAINT RECOV CODE LEVEL CODE			(2) FEDERAL STOCK NUMBER	(3) DESCRIPTION  REFERENCE NUMBER & MFR CODE	(4) MODELS USABLE ON	(5) UNIT OF ISSUE	(6) 30-DAY DS MAINT ALW INC IN UNIT (A) (B) (C) 1-20 21-50 51-100	(7) 1-YR ALW PER 100 EQUIP CNTGCV	(8) DEPOT MAINT ALW PER 100 EQUIP	(9) ILLUSTRATION (A) (B) FIG ITEM NO NO	
GROUP 04 INSTRUMENT PANEL CONTINUED											
MF	F			38719-11 (99664)			1			4	11
HOSE ASSEMBLY, 12 IN. LG. FUEL PRESSURE VALVE TO FUEL PRESSURE GAGE MAKEFR AR 4720-277-8982 HOSE 2 EA P/N MS27404-3 ADAPTER											
MF	F			38719-12 (99664)			1			4	12
HOSE ASSEMBLY, 17-1/2 IN. LG. AIRSPEED INDICATOR TO PRESSURE SELECTOR VALVE MAKEFR AR 4720-277-8982 HOSE 2 EA P/N MS27404-3 ADAPTER											
MF	F			38719-13 (99664)			1			4	13
HOSE ASSEMBLY, 18 IN. LG. RESERVOIR MAKEFR AR 4720-277-8982 HOSE 1 EA P/N MS27404-3 ADAPTER											
P	F		4730-837-0856	MS24391D4L (96906)	EA	1	* * *			4	14
PLUG, MACHINE, THREAD, FUEL PRESSURE GAGE											
P	F		4730-812-5036	MS24399D3 (96906)	EA	1	* * *			4	15
REDUCER, TUBE, PRESSURE SELECTOR VALVE											
P	F		4730-278-3680	MS20822-3D (96906)	EA	16	* * *			4	16
ELBOW, PIPE TO TUBE, INSTRUMENT & SELECTOR VALVES											
P	F		4730-278-2973	AN932U2 (88044)	EA	3	* * *			4	17
PLUG, PIPE, VACUUM SELECTOR VALVE											
X2	F		4730-187-0085	AN816-3D (88044)	EA	4	* * *			4	18
ADAPTER, STRAIGHT, PIPE TO TUBE, ALTIMETER & VACUUM SELECTOR VALVE											
P	F		4730-812-5036	MS24399D3 (96906)	EA	4	* * *			4	19
REDUCER, TUBE, PANEL INSTRUMENTS											
P	F		5330-582-2133	MS28775-011 (96906)	EA	4	* * *			4	20
PACKING, PREFORMED, PANEL INSTRUMENTS											
P	F		5330-260-9311	AN6227B5 (88044)	EA	1	* * *			4	21
PACKING, PREFORMED, VACUUM SELECTOR VALVE											
P	F	R	6610-528-0480	MS28049-1 (96906)	EA	1	* * *			4	22
INDICATOR, VERTICAL VELOCITY, RATE OF CLIMB											
P	F		4820-081-9180	112716 (99664)	EA	1	* * *			4	23
VALVE, LINEAR, PRESSURE SELECTOR, 7 WAY											
ATTACHING PARTS											
P	F		5305-206-0507	AN515-10-5 (88044)	EA	2	* * *			4	24
SCREW, MACHINE											
P	F		5310-045-3296	MS35338-43 (96906)	HD	2	* * *			4	25
WASHER, LOCK											
---*---											
P	F		4820-088-4529	107740 (99664)	EA	3	* * *			4	26
VALVE, LINEAR, 3 WAY, FLANGED											
1 EA AIRSPEED											
1 EA FUEL PRESSURE											
1 EA RATE OF CLIMB											
ATTACHING PARTS											
P	F		5305-984-4988	MS35206-228 (96906)	HD	12	* * *			4	27
SCREW, MACHINE											
P	F		5310-045-4007	MS35338-41 (96906)	HD	12	* * *			4	28
WASHER, LOCK											
---*---											

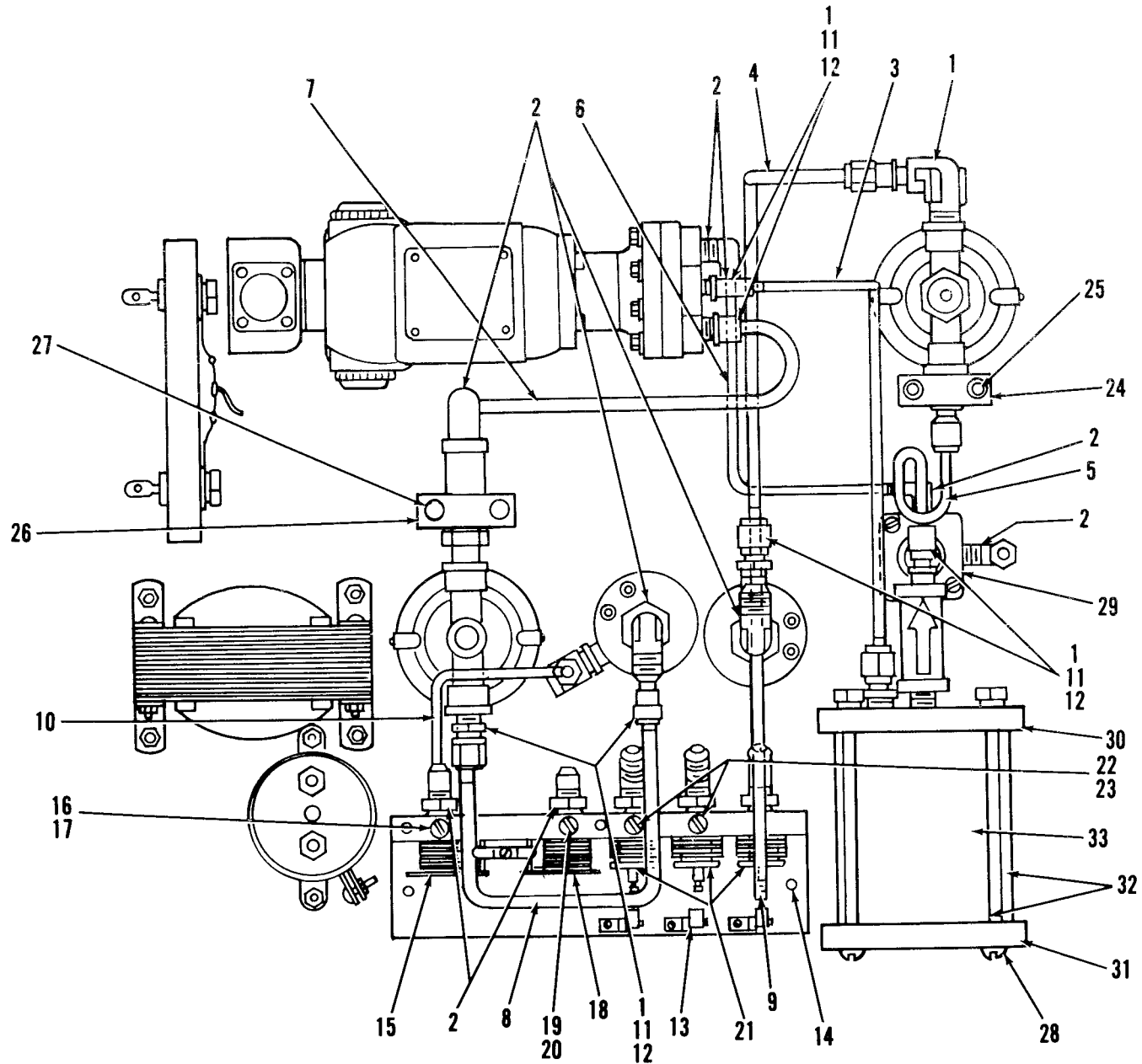


Figure 5. Bottom Plate

(1) SOURCE, MAINT AND REC CODE			(2) FEDERAL STOCK NUMBER	(3) DESCRIPTION  REFERENCE NUMBER & MFR CODE	(4) MODELS USABLE ON	(5) UNIT OF ISSUE	(6) 30-DAY DS MAINT ALW			(7) 1-YR ALW PER 100 EQUIP CNTGCY	(8) DEPOT MAINT ALW PER 100 EQUIP	(9) ILLUSTRATION (A) (B) FIG ITEM NO NO	
(A)	(B)	(C)				UNIT INC IN UNIT	(A)	(B)	(C)			(A)	(B)
SOURCE CODE	MAINT LEVEL	RECOV CODE					1-20	21-50	51-100			FIG NO	ITEM NO
GROUP 04 INSTRUMENT PANEL CONTINUED													
P	F		4820-085-1900	102792 (99664)		EA	2	*	*	*		4	29
P	F		5305-984-4988	MS35206-228 (96906)		HD	8	*	*	*		4	30
P	F		5310-045-4007	MS35338-41 (96906)		HD	8	*	*	*		4	31
X2	F			69578 (99664)		EA	1					4	32
P	F		5320-957-3582	AD42S (07707)		EA	16	*	*	*		4	33
P	F	R	6610-722-0967	MILA27229AMENDATYPEAAU8A (81349)		EA	1	*	*	*		4	34
P	F		6610-899-7445	MS28046T1 (96906)		EA	1	*	*	*		4	35
P	F		6620-515-5800	MS28077T5 (96906)		EA	1	*	*	*		4	36
P	F		6620-557-0403	MS28061-1 (96906)		EA	1	*	*	*		4	37
GROUP 05 BOTTOM PLATE													
X2	F		4730-187-0085	AN816-3D (88044)		EA	8	*	*	*		5	1
P	F		4730-278-3680	MS20822-3D (96906)		EA	8	*	*	*		5	2
X2	F			69911-1 (99664)		EA	1					5	3
X2	F			69911-2 (99664)		EA	1					5	4
X2	F			69911-3		EA	1					5	5
X2	F			69911-4 (99664)		EA	1					5	6
X2	F			69911-5 (99664)		EA	1					5	7
X2	F			69911-6 (99664)		EA	1					5	8
X2	F			69911-7 (99664)		EA	1					5	9
X2	F			69911-8 (99664)		EA	1					5	10
P	F		4730-277-5362	MS20819-3D (96906)		EA	16	*	*	*		5	11
P	F		4730-497-4457	AN818-3D (88044)		EA	6	*	*	*		5	12
P	F		4730-231-5605	AN914-1 (88044)		EA	1	*	*	*		5	
X2	F			38617 (99664)		EA	1					5	13



(1) SOURCE, MAINT AND REC CODE			(2) FEDERAL STOCK NUMBER	(3) DESCRIPTION  REFERENCE NUMBER & MFR CODE		(4) MODELS USABLE ON	(5) UNIT OF ISSUE	(6) 30-DAY DS MAINT ALW			(7) 1-YR ALW PER 100 EQUIP CNTGCTY	(8) DEPOT MAINT ALW PER 100 EQUIP	(9) ILLUSTRATION (A) (B) FIG ITEM NO NO	
(A) SOURCE CODE	(B) MAINT LEVEL	(C) RECOV CODE						(A)	(B)	(C)			(A)	(B)
								1-20	21-50	51-100				
GROUP 05 BOTTOM PLATE CONTINUED														
P	F		5305-984-6193	MS35206-245	(96906)	SCREW, MACHINE	HD	2	*	*	*			5 14
---*---														
P	F		4920-881-0212	111167	(99664)	. BELLOWS, VACUUM MANIFOLD PRESSURE ATTACHING PARTS	EA	1	*	*	*			5 15
P	F		5305-984-6194	MS35206-246	(96906)	. SCREW, MACHINE	HD	1	*	*	*			5 16
P	F		5310-176-8135	AN340-8	(88044)	. NUT, PLAIN, HEXAGON	GR	1	*	*	*			5 17
---*---														
P	F		4920-881-0209	111145	(99664)	. BELLOWS, ASSEMBLY, VACUUM, ALTIMETER ATTACHING PARTS	EA	1	*	*	*			5 18
P	F		5305-984-6194	MS35206-246	(96906)	. SCREW, MACHINE	HD	1	*	*	*			5 19
P	F		5310-176-8135	AN340-8	(88044)	. NUT, PLAIN, HEXAGON	GR	1	*	*	*			5 20
---*---														
P	F		4920-881-0208	111144	(99664)	. BELLOWS, PRESSURE ATTACHING PARTS	EA	3	*	*	*			5 21
P	F		5305-984-6194	MS35206-246	(96906)	. SCREW, MACHINE	HD	3	*	*	*			5 22
P	F		5310-176-8135	AN340-8	(88044)	. NUT, PLAIN, HEXAGON	GR	3	*	*	*			5 23
---*---														
X2	F			69594	(99664)	CLAMP BRACKET, SUMP, PRESSURE FUEL FILTER	EA	1						5 24
ATTACHING PARTS														
P	F		5305-995-3442	MS35207-268	(96906)	SCREW, MACHINE	HD	2	*	*	*			5 25
---*---														
X2	F			69593	(99664)	BRACKET, SUMP, VACUUM, FILTER ATTACHING PARTS	EA	1						5 26
P	F		5305-984-4983	MS35206	(96906)	SCREW, MACHINE	HD	2	*	*	*			5 27
---*---														
P	F		5305-984-4983	MS35206-226	(96906)	SCREW, MACHINE, RESERVOIR MTG	HD	2	*	*	*			5
P	F		5305-881-1454	30376	(99664)	SETSCREW, RESERVOIR MTG	EA	2	*	*	*			5 28
P	F		4820-097-9754	710-13-1-8D	(86786)	VALVE, LINEAR, RESERVOIR FILTER	EA	1	*	*	*			5 29
X2	F			69596	(99664)	FRONT PLATE, RESERVOIR	EA	1						5 30
X2	F			69597	(99664)	BACK PLATE, RESERVOIR	EA	1						5 31
P	F		5330-104-9491	81460	(99664)	GASKET, RESERVOIR, FRONT & REAR	EA	2	*	*	*			5 32
P	F		9340-088-5126	112645	(99664)	GLASS TUBING, ROUND, RESERVOIR	EA	1	*	*	*			5 33
X2	F			69593	(99664)	BRACKET, SUMP, PRESSURE, FILTER	EA	1						5
GROUP 06 BULK MATERIAL														
P	F			MS27404-3	(96906)	ADAPTER, STRAIGHT, PIPE TO HOSE, ALUMINUM ALLOY, U/W 3/16 ID HOSE	EA							
P	F		4720-277-8982			HOSE, RUBBER, GASOLINE & OIL RESISTANT, 3/16 IN. ID, 0.436 IN. OD, 250 PSI MAX RATED WORKING PRESSURE, 50 FT LG, MIL-H-5593SIZE3	FT		*	*	*			

## PART I

STOCK NUMBER	FIGURE NUMBER	ITEM NUMBER	STOCK NUMBER	FIGURE NUMBER	ITEM NUMBER
4720-277-8982					
4730-186-7797	3	6			
4730-187-0085	3	12			
4730-187-0085	4	18			
4730-187-0085	5	1			
4730-231-5605	5				
4730-277-5362	5	11			
4730-278-2973	4	17			
4730-278-3680	4	16			
4730-278-3989	3	14			
4730-278-9352	3	13			
4730-497-4458	5	12			
4730-720-1508	3	5			
4730-812-5036	2	10			
4730-812-5036	4	15			
4730-812-5036	4	19			
4730-828-9974	2	11			
4730-834-9560	2	9			
4730-837-0856	4	14			
4730-866-1834	2	12			
4820-081-9180	4	23			
4820-085-1900	4	29			
4820-088-4529	4	26			
4820-097-9754	5	29			
4920-855-6125	2	2			
4920-865-8007	2	1			
4920-865-8064	2	3			
4920-866-6950	2	4			
4920-866-6980	2	8			
4920-881-0208	5	21			
4920-881-0209	5	18			
4920-881-0212	5	15			
4920-988-0206	1				
5305-206-0507	4	24			
5305-881-1454	5	28			
5305-984-4983	5				
5305-984-4983	5	27			
5305-984-4988	4	27			
5305-984-4988	4	30			
5305-984-6193	5	14			
5305-984-6194	5	16			
5305-984-6194	5	19			
5305-984-6194	5	22			
5305-993-0191	3	2			
5305-993-0191	3	8			
5305-995-3442	5	25			
5310-013-4524	3	10			
5310-045-3296	4	25			
5310-045-4007	4	28			
5310-045-4007	4	31			
5310-176-8135	5	17			
5310-176-8135	5	20			
5310-176-8135	5	23			
5310-543-2410	3	9			
5320-957-3582	3	4			
5320-957-3582	4	33			
5330-104-9491	5	32			
5330-260-9311	4	21			
5330-582-2133	4	20			
5920-892-9311	3	17			
5935-721-0490	3	7			
6240-155-7836	3	15			
6610-558-0480	4	22			
6610-722-0967	4	34			
6610-899-7445	4	35			
6620-515-5800	4	36			
6620-557-0403	4	37			
9340-088-5126	5	33			

REFERENCE NUMBER	MFG CODE	FIG NUMBER	ITEM NUMBER	REFERENCE NUMBER	MFG CODE	FIG NUMBER	ITEM NUMBER
AD42S	07707	3	4	102792	99664	4	29
AD42S	07707	4	33	107740	99664	4	26
AN340-8	88044	5	17	111144	99664	5	21
AN340-8	88044	15	20	111145	99664	5	18
AN340-8	88044	5	23	111167	99664	5	15
AN515-10-5	88044	4	24	112645	99664	5	33
AN6227B5	88044	4	21	112716	99664	4	23
AN816-3D	88044	3	12	191236	99664	3	1
AN816-3D	88044	4	18	30376	99664	5	28
AN816-3D	88044	5	1	32878	99664	3	11
AN818-3D	88044	5	12	38613	99664	2	1
AN911-1	88044	3	16	38614	99664	2	2
AN914-1	88044	5		38615	99664	2	3
AN916-1	88044	3	13	38616	99664	2	4
AN917-1	88044	3	14	38617	99664	5	13
AN929A4C	88044	3	5	38619	99664	2	5
AN932U2	88044	4	17	38630	99664	2	6
FHN26G1	81349	3	17	38631	99664	2	7
MILA27229AMENDATYPEEAAU8A	81349	4	34	38632	99664	2	8
MS20819-3D	96906	5	11	38719-1	99664	4	1
MS20822-3D	96906	4	16	38719-10	99664	4	10
MS20822-3D	96906	5	2	38719-11	99664	4	11
MS24391D4L	96906	4	14	38719-12	99664	4	12
MS24392D3	96906	2	12	38719-13	99664	4	13
MS24392D4	96906	2	19	38719-2	99664	4	2
MS24399D2	96906	2	11	38719-3	99664	4	3
MS24399D3	96906	2	10	38719-4	99664	4	4
MS24399D3	96906	4	15	38719-5	99664	4	5
MS24399D3	96906	4	19	38719-6	99664	4	6
MS25237-327	96906	3	15	38719-7	99664	4	7
MS28046T1	96906	4	35	38719-8	99664	4	8
MS28049-1	96906	4	22	38719-9	99664	4	9
MS28061-1	96906	4	37	69578	99664	3	3
MS28077T5	96906	4	36	69578	99664	4	32
MS28775-011	9690	4	20	69588	99664	3	
MS3102R18-1P	96906	3	7	69593	99664	5	26
MS35206-212	96906	3	2	69593	99664	5	
MS35206-212	96906	3	8	69594	99664	5	24
MS35206-226	96906	5	27	69596	99664	5	30
MS35206-226	96906	5		69597	99664	5	31
MS35206-228	96906	4	27	69911-1	99664	5	3
MS35206-228	96906	4	30	69911-2	99664	5	4
MS35206-245	96906	5	14	69911-3	99664	5	5
MS35206-246	96906	5	16	69911-4	99664	5	6
MS35206-246	96906	5	19	69911-5	99664	5	7
MS35206-246	96906	5	22	69911-6	99664	5	8
MS35206-268	96906	5	25	69911-7	99664	5	9
MS35338-40	96906	3	9	69911-8	99664	5	10
MS35338-41	96906	4	28	710-13-1-8D	86786	5	29
MS35338-41	96906	5	31	7365	99664		61
MS35338-43	96906	4	25	81460	99664	5	32
MS35649-42	96906	3	10				

By Order of the Secretary of the Army:

W. C. WESTMORELAND,  
*General, United States Army,*  
*Chief of Staff.*

OFFICIAL:

KENNETH G. WICKHAM,  
*Major General, United States Army,*  
*The Adjutant General.*

DISTRIBUTION:

To be distributed in accordance with DA Form 12-31 (qty rqr block no. 95) requirements for direct support maintenance instructions for all Fixed Wing and Rotor Wing aircraft.

RECOMMENDED CHANGES TO EQUIPMENT TECHNICAL PUBLICATIONS



THEN... JOT DOWN THE DOPE ABOUT IT ON THIS FORM, CAREFULLY TEAR IT OUT, FOLD IT AND DROP IT IN THE MAIL!

**SOMETHING WRONG WITH THIS PUBLICATION?**

FROM: (PRINT YOUR UNIT'S COMPLETE ADDRESS)

DATE SENT

PUBLICATION NUMBER

PUBLICATION DATE

PUBLICATION TITLE

BE EXACT... PIN-POINT WHERE IT IS

PAGE NO.	PARA-GRAPH	FIGURE NO.	TABLE NO.
----------	------------	------------	-----------

IN THIS SPACE TELL WHAT IS WRONG AND WHAT SHOULD BE DONE ABOUT IT:

TEAR ALONG PERFORATED LINE

PRINTED NAME, GRADE OR TITLE, AND TELEPHONE NUMBER

SIGN HERE:

DA FORM 2028-2  
1 JUL 79

PREVIOUS EDITIONS ARE OBSOLETE.

P.S.—IF YOUR OUTFIT WANTS TO KNOW ABOUT YOUR RECOMMENDATION MAKE A CARBON COPY OF THIS AND GIVE IT TO YOUR HEADQUARTERS.



TM 55-4920-320-30P TESTER, PITOT AND STATIC SYSTEM P/N 7365-1969

PIN: 009602-000